

Mini RGB Rock Light Bluetooth 4.0

- Bluetooth control
- Mobile connection
- simple fashion
- DIY effect



Bluetooth Devices



Search the bluetooth devices, it will be appear the name of "bluetooth dimming" in the search process. Click to connect it. The connection is successful after the light bulb icon is active, long press can change the name.

Search Bluetooth Devices

The App will automatically connect the device every time when it is open after the connection is successful, Do not need to manually connect everytime

Gradual / jump change to switch back and forth

Can choose 14 colors at most

Long press



Technology parameter

Input Voltage: DC12-24V
 Output power: 2A*3 common Anode
 Control mode: mobile phone+infrared direct control
 Gray scale: 256*256*256
 Total brightness level: 8 grade
 operating temperature: -20C~50C
 IP Grade: IP 68
 Size: 79*47*21mm



Up to 15 scenarios can be set in advance

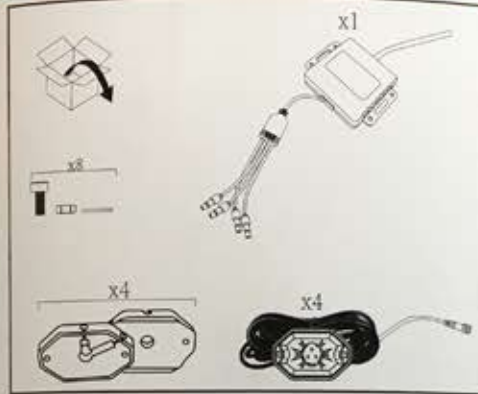
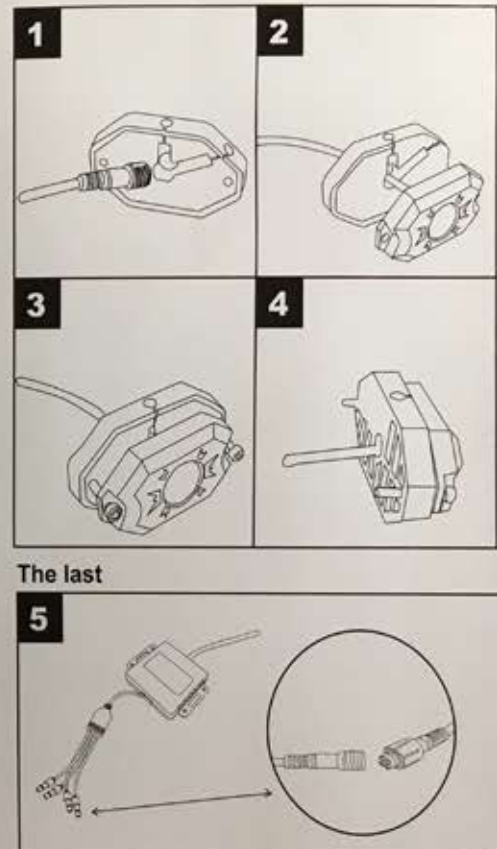
Change speed
 Brightness
 Stroboscopic speed

Music control

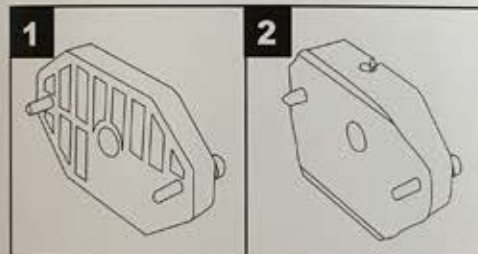
Click the shake button, the button can be Shake mobile phone can choose a color

Choose adjusting controlling model

Install Step



Two kinds of fixed frame



Android 4.3 above Android 4.3 above IOS7 above

Icon will display activated state when the connection is successful

Open the APP show the "Bluetooth connection fails"

please check whether your bluetooth device in a state of electricity
 please check whether your bluetooth device is within range of a mobile phone bluetooth, usually mobile phone bluetooth is within 10 meters, different mobile have different distance, please refer to the previous "bluetooth device connection" to reconnect the device.

The color of the Light can not match the set up color

please check if the line output to the light is connect correctly

single color dimming mode: the Anode — the Anode
 the cathode — R

Color temperature mode: the Anode — the Anode
 warm white — R
 cold white — G

RGB mode: the Anode — the Anode
 R ← → R
 B ← → B
 G ← → G